

Billy McNutt
County Commissioner Pct. #1



Carl Cannon
County Commissioner Pct. #3

Carl Wiseman
County Commissioner Pct. #2

David Pohorelsky
County Commissioner Pct. #4

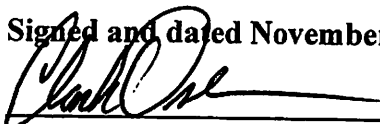
CLARK OSBORNE
Madison County Judge
103 West Trinity, Suite 113

**NOTICE OF THE SPECIAL MEETING OF THE COMMISSIONERS COURT OF
MADISON COUNTY, TEXAS
MONDAY, NOVEMBER 14, 2022, AT 9:30 A.M.
IN THE COUNTY COURTROOM OF THE MADISON COUNTY ANNEX**

1. Invocation and Pledges of Allegiance
2. Call the meeting to order – Judge Clark Osborne
County Clerk – Susanne Morris
3. ***Public Comment - Hear Comments in reference to the following Agenda Items Only - time limit 3 minutes, one person at a time will be called from the Public Participation Forms submitted. Move to the front of the Court and stand at the podium.***
4. Discuss and consider approving the sale of decommissioned county patrol units, equipment and one trailer by auction. A detailed list is attached as Exhibit A and incorporated hereto.
5. Canvass the votes from the November 8, 2022, General Election.
6. ***Public Comment - No Discussion or Action will be taken at this time by the Court - A three (3) minute limit per speaker. One person at a time will be called from the Public Participation submitted. Move to the front of the Court and stand at the podium. Please address your comments to your Commissioner.***
7. ADJOURN

Certification:

Signed and dated November 10, 2022.



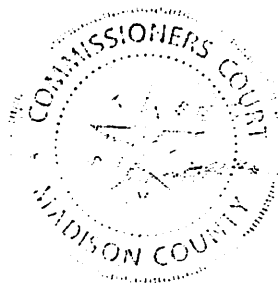
CLARK OSBORNE, COUNTY JUDGE

I, the undersigned County Clerk, do hereby certify that the agenda for the above-named Commissioners' Court is a true and correct copy, and that I posted this copy on the 10th day of November, 2022 at 2:45 pm on the bulletin board and all doors of the Madison County Courthouse, in Madisonville, Texas. This notice remained posted continuously for at least 72 hours preceding the scheduled time of the meeting.

Signed and dated 10th day of November, 2022

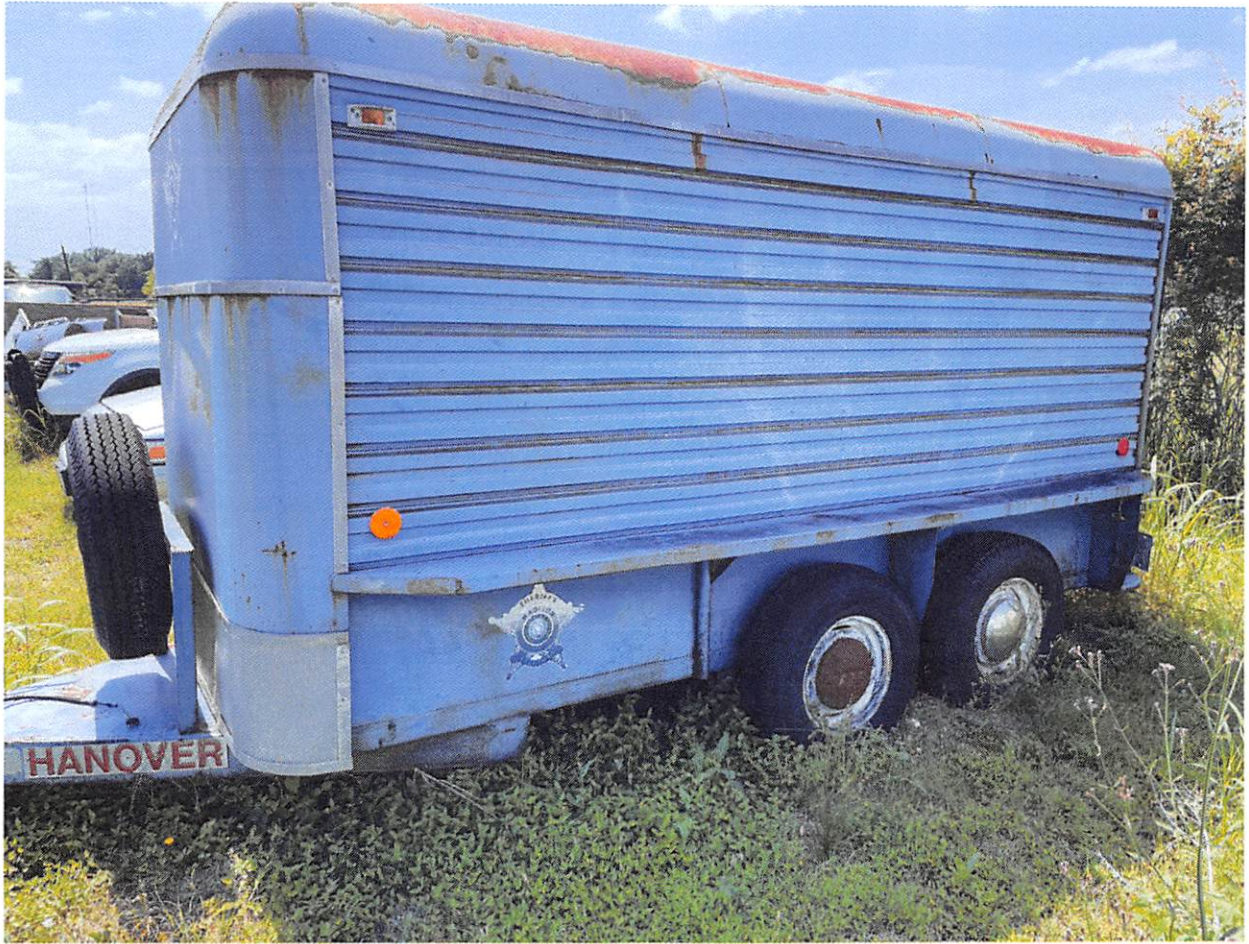


Susanne Morris, County Clerk



Lot	Name	Description	Condition
9108	2012 Chevy Impala VIN: 2G1WF5336D1139108, OD: 179307	3.6 L, automatic transmission, I am/FM radio, E, power windows and power locks, power mirrors, cloth rear seat, cage	battery is dead. Starts and moves forward and back.
4076	2010 Ford F150, VIN: 1F TEX1CW8AFA74076, OD: 155366	4.6 L gas motor, automatic transmission, AM/FM, radio, AC, cloth interior, power, windows, power, mirrors, power locks.	battery is dead. Starts and moves forward and back.
2880	2017 Chevy 2500 Silverado, VIN: 3GCUKNEC4HG232880, OD: 120751	5.3 L, gas motor, automatic transmission, 4 x 4, a.m., FM, radio, AC, vinyl seats, power blocks, power, windows, power, mirrors, B & W gooseneck hitch with brake controller. Backup camera.	Battery is dead. Starts and move forward and backwards. Reported needs transmission. Ac blows cold
4891	2016 Ford explorer, VIN: 1FM5K8ARXGGC14891, OD: 136465	3.7 L, gas motor, automatic transmission, cloth interior, final rear seat, power, windows, power, locks, power, mirrors, police gear has been removed.	battery is dead, starts and moves forward and back, AC does not work, damage to passenger side, rear door
1553	2015 Ford Explorer VIN: 1FM5K8AR5FGB51553, OD: 177791	3.7 L gas motor, automatic transmission, cloth interior, AM/FM, radio, AC, vinyl rear seat, police gear has been removed.	battery is dead, starts and moves forward and back. Center infotainment screen does not come on, AC blows cold.
9087	2013 Chevy impala, VIN: 2G1WF5E32D1139087, OD: 117061	3.6 L gas motor, automatic transmission, AC, cloth interior, vinyl, rear seat, powered locks, power, windows, power mirrors.	battery is dead, motor turns over but does not start
2018	2010 Ford crown Vic, VIN: 2FABP7BV58X142018, OD: exempt	4.6 L gas motor, automatic transmission, AM/FM, radio, cloth interior, vinyl rear seat, Power windows, power, locks, power,	Battery is dead, starts and moves forward and backwards. Odometer does not work
1555	2015 Ford explore, VIN: 1FM5K8AR9FGB51555, OD: 133967	3.7 L gas motor, automatic transmission, AM/FM, radio, cloth, front seats, vinyl, rear seat, power, windows, power, locks, power	Battery is dead, starts and moves forward and back.
1755	2012 Chevy impala, VIN: 2G1WD5E34C1201755, OD:	3.6 L gas motor, automatic transmission, AM/FM, radio, AC, cloth, front seats, vinyl, rear seat, power, windows, power, locks, power	Battery is dead, will not start
4188	2013 Chevy Tahoe, VIN: 1GNLC2E01DR354188, OD 187978	5.3 L gas motor, automatic transmission, AM/FM, radio, front and rear, AC, cloth, front seat, vinyl, rear seat, power, windows, power, locks, power, mirrors, rear divider	battery is dead, starts and moves forward and back, reportedly caught on fire a couple times
3127	2013 Ford Explorer, VIN: 1FM5K8AR4DGC63127, OD:	3.7 L gas motor, automatic transmission, AM/FM, radio, cloth, front seats, vinyl, rear seat, power, windows, power, locks, power	battery is dead, starts and moves forward and back

3119	2013 Ford explorer, VIN: 1FM5K8AR5DGC63119, OD:	3.7 L gas motor, automatic transmission, AM/FM, radio, cloth, front seats, vinyl, rear seat, power windows, power, locks, power	Battery is dead, starts and moves forward and back, forward gears are weak, and transmission shifts hard.
2545	1999 Ford crown Vic, VIN:2EAEPT1W7XX242545, OD:	4.6 L gas motor, automatic transmission, AM/FM, radio, AC, cloth, front and rear seats.	Wrecked, non running
9751	2001 dodge 2500 van VIN: 2B4JB25Y51K509751, OD:	5.2 L gas motor, automatic transmission, AM/FM, radio, front and rear AC, no rear seats.	
842	2008 Ford crown Vic VIN: 2FABP7BV78X118142	Wrecked unit	Wrecked not running
12	Tractor supply, aluminum toolbox	71 x 13 x 16"	
13	Ranch Hand Grill guard	came off of a 2017 Chevy Silverado	
14	Police vehicle accessories	Whalen led light bars, push bumpers, center consoles, divider cages, spot lights,	



HANOVER TRAILER

mfg. by

TRAILITE, INC.

P.O. BOX 4144

BRYAN, TEXAS 77805

409-778-2121

This vehicle conforms to all applicable U.S. Federal Motor Vehicle Safety Regulations

in effect on the date of manufacture

BVH-BV15-17367

MARCH 6, 1992

SERIAL NO.

DATE OF MANUFACTURE